



Basic Web Design Using Dreamweaver

Robby Seitz
121 Powers Hall
915-7822
rseitz@olemiss.edu



Basic Web Design

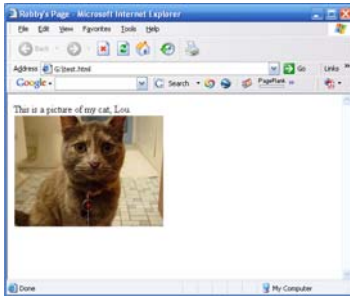
- What is the easiest way to build or update a Web page?
Get someone else do it for you.
- What can you give someone to help them build a good Web page for you?
Money.



Methods Compared

Method	Builder Skills Required	Management Issues
MS Word & Publisher	*Not intended for Web pages	*Creates illegible code *Almost impossible to update *Non-standard HTML
FrontPage	*Strong use of templates	*FrontPage original files required to maintain *Non-standard HTML *Massive file sizes
Google Sites, FaceBook, etc.	*No skills needed *Limited flexibility *Locked into domain name	*Easy to update – Difficult to mess up!
WordPress	*Skills depend on level of interaction needed: Ranges from easy to very difficult	*Easy for everyday tasks *Not so easy for major changes
Dreamweaver	*Serious HTML knowledge *Lots of assistance provided	*Clear and standard HTML is written and may be edited by any capable program/person
Text editor	*In-depth HTML knowledge	*Ditto above

HTML Basics



Web Concepts

Expect viewers to see things differently.

Obstacles to consistent page rendering include:

- Different browser versions
- Different screen resolutions
- Different accessibility needs
- Different mobile devices



Web Concepts

Keep layout and content as separate as possible.

- Content – Information and its contextual meaning.
- Layout – The format and arrangement of information.

Basic Dreamweaver

Parts of the screen

- Top menu: File, Edit, View...
- Top toolbar: Common, Layout, Forms...



Basic Dreamweaver

Parts of the screen

- Tabs: Document names
- Code/Design views
- File Transfer, Validation



Basic Dreamweaver

Parts of the screen

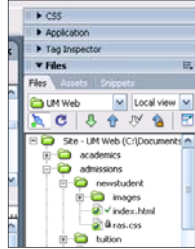
- Tag Selector
- Properties window:
Format, Style, Align...



Basic Dreamweaver

Parts of the screen

- Windows on right side: Files, CSS...



Basic Web Design Using Dreamweaver

www.dreamweaver.com

Robby Seitz
121 Powers Hall
915-7822
rseitz@olemiss.edu
