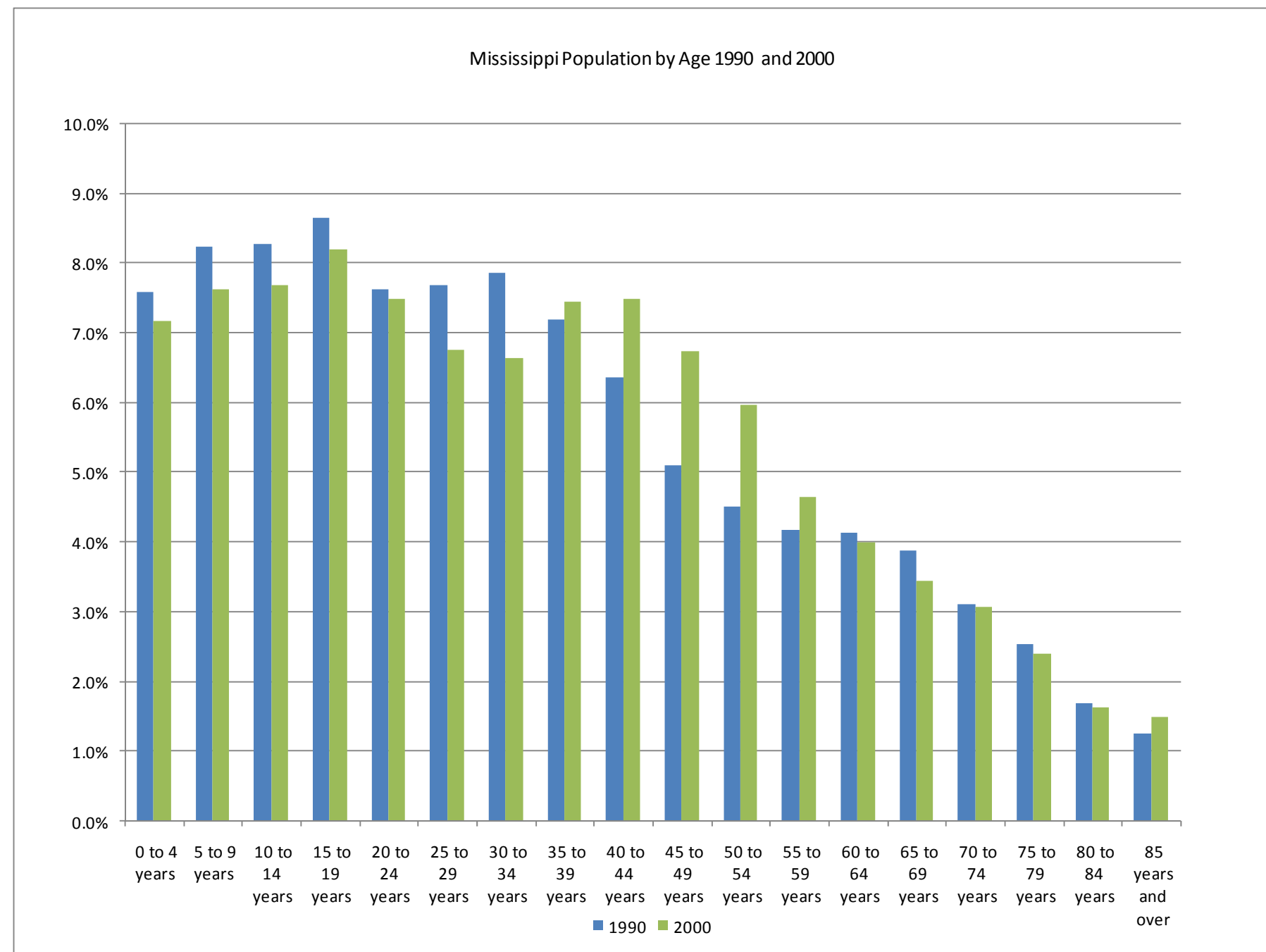
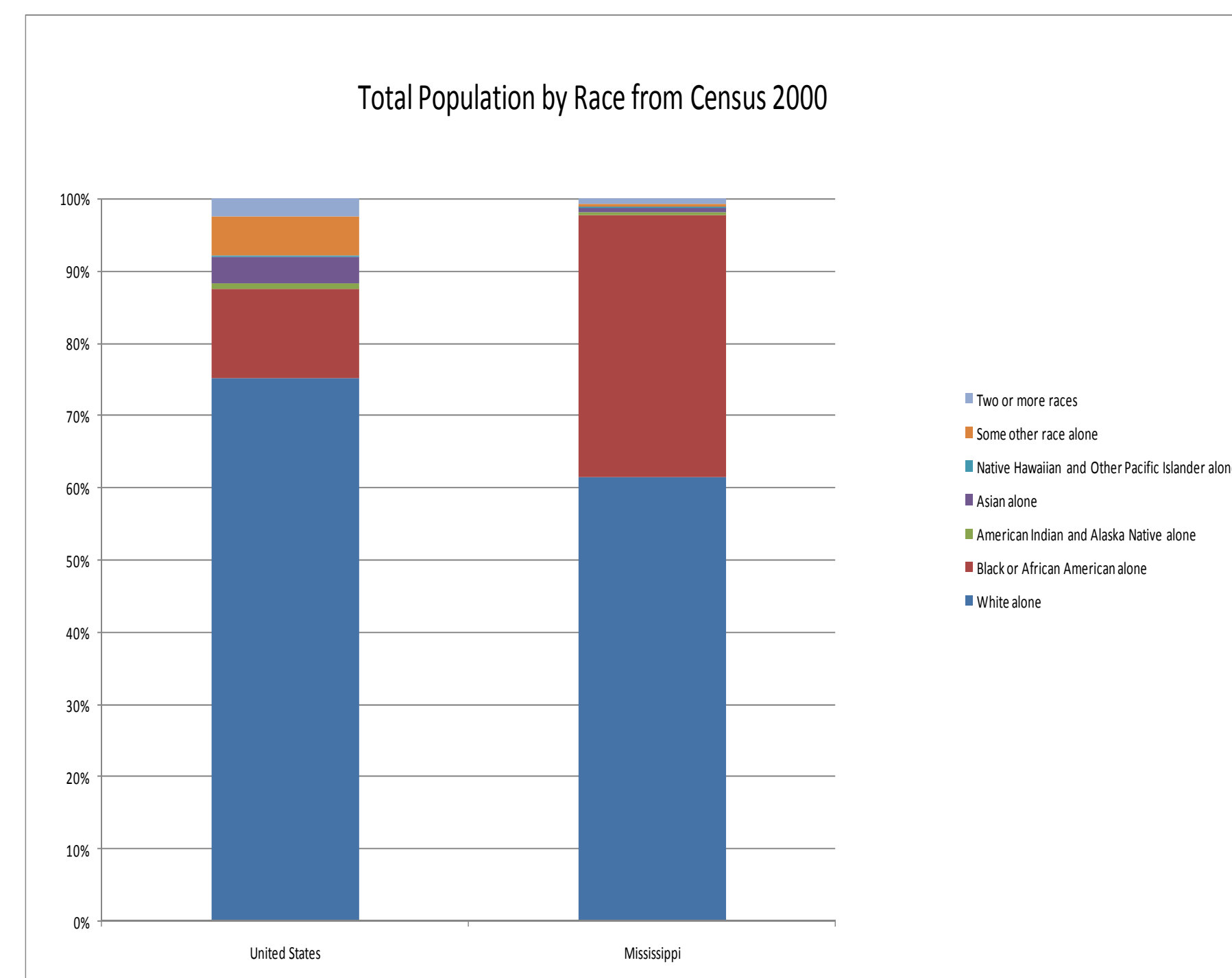
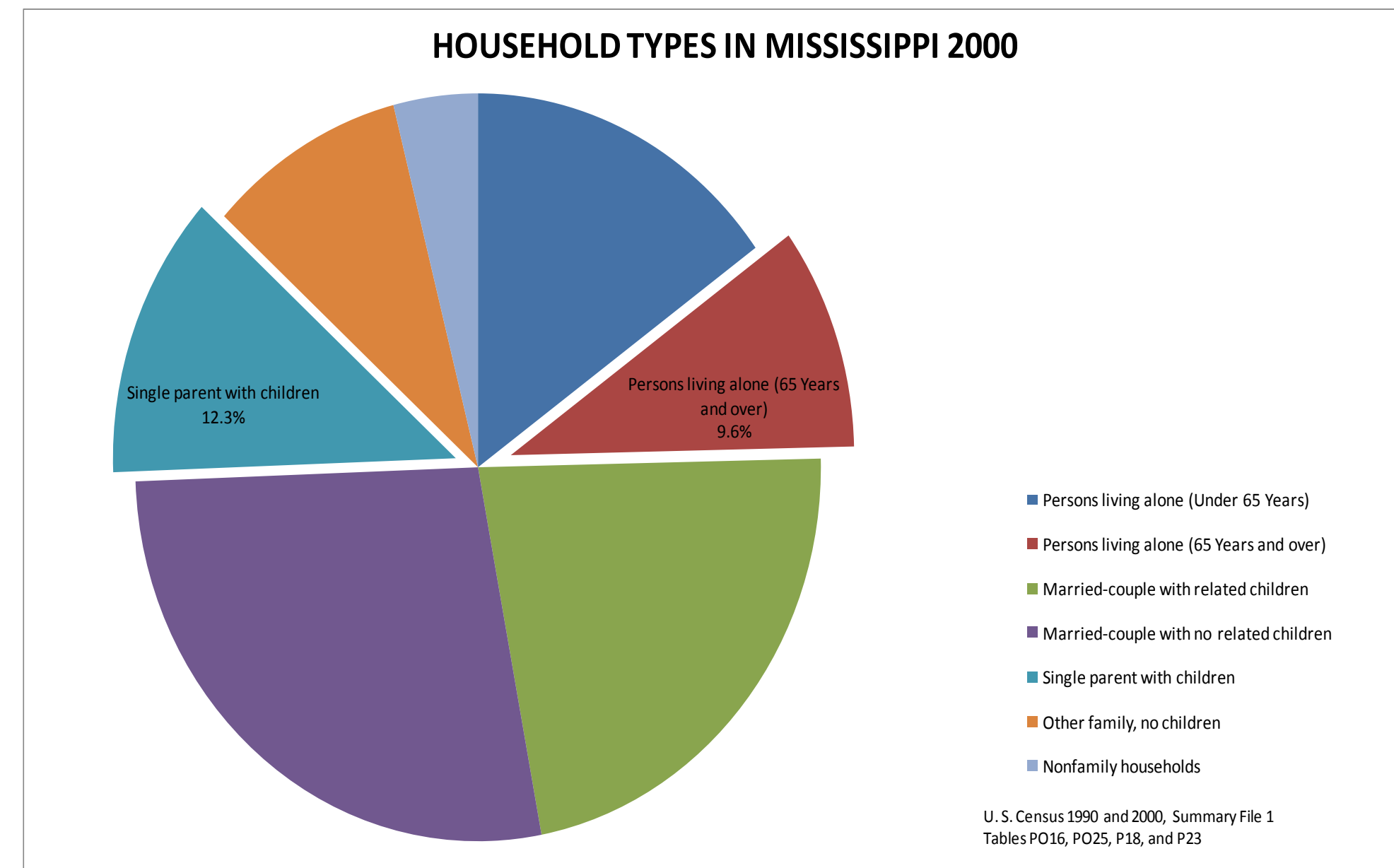


What we will learn from the 2010 Census



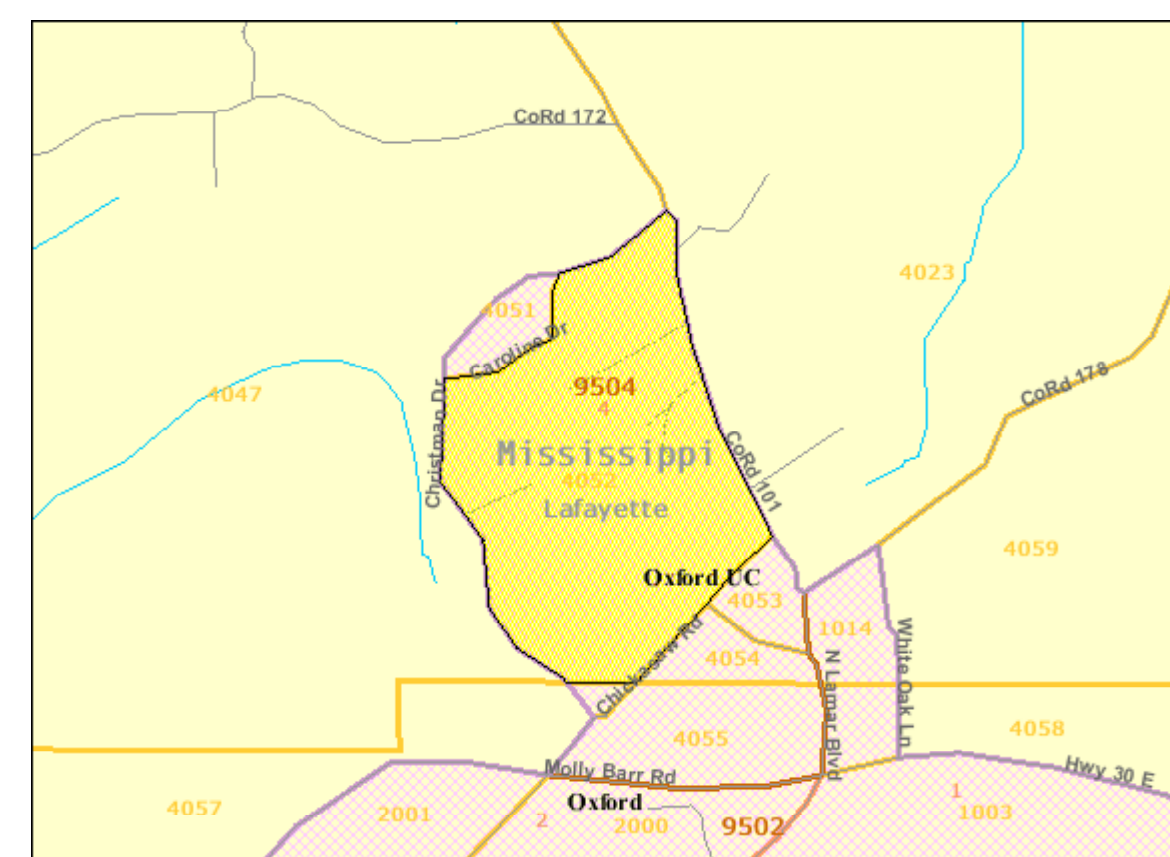
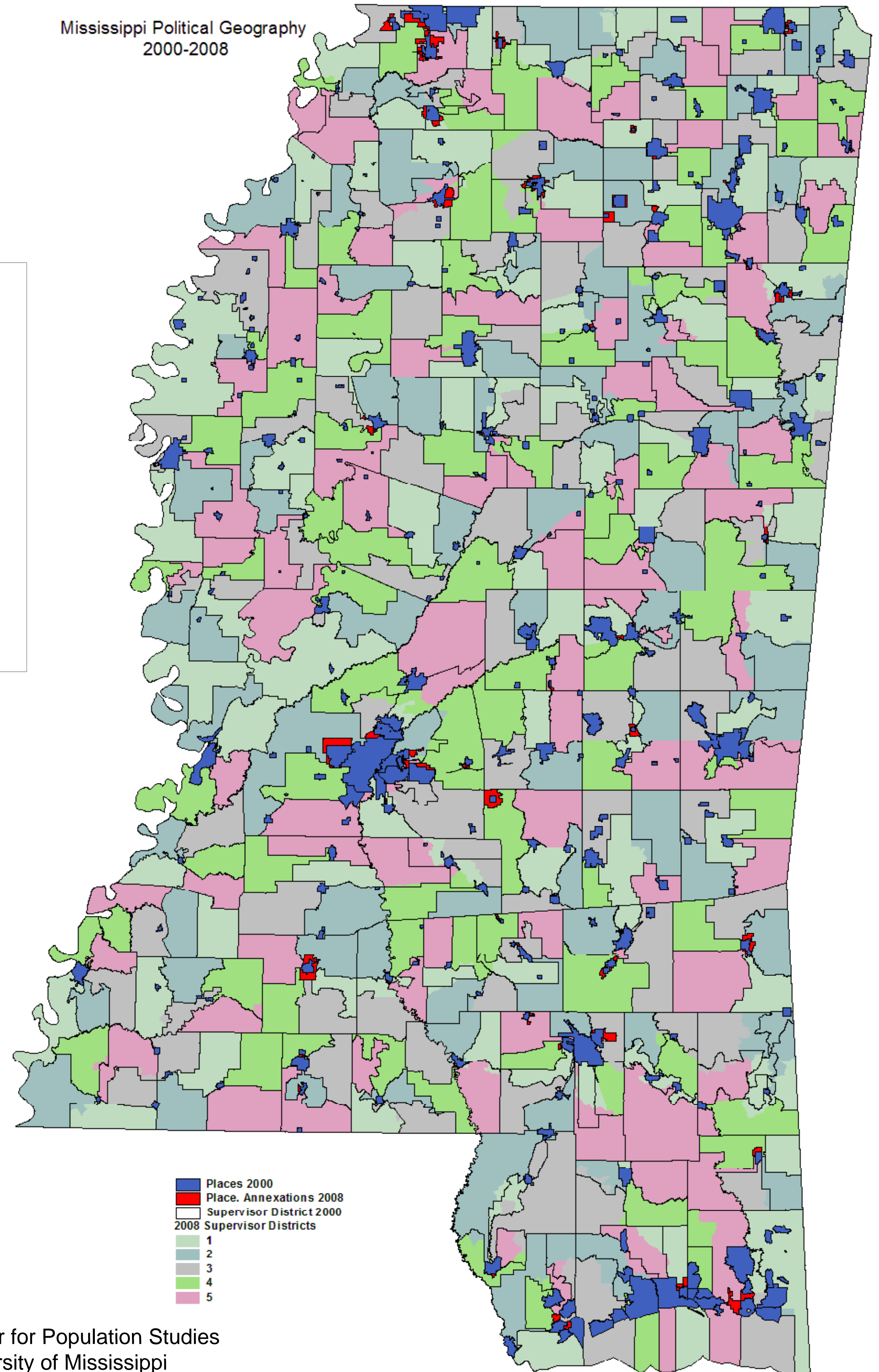
With the information gathered from the "short form" census in 2010, the Census Bureau will show how Mississippi's population is changing. New political geographies that have been created since 2000 such as county supervisor districts, place boundaries, school district changes and state legislative districts will all be provided with information not only on the total number of people but the racial diversity, the age/sex structure and data on the changing household structure.



P36. OWN CHILDREN UNDER 18 YEARS BY FAMILY TYPE - Universe: Own children under 18 years
Data Set: Census 2000 Summary File 1 (SF 1) 100-Percent Data

	Total:	In married-couple families:	Percent of Children In married couple families	Male householder, no wife present:	Female householder, no husband present:
Highest Percentage of Children in Married-Couple Families					
George County	4,906	3,943	80.4	263	700
Tishomingo County	4,046	3,205	79.2	166	675
Lamar County	9,976	7,901	79.2	389	1,686
Itawamba County	4,983	3,874	77.7	282	827
DeSoto County	27,198	21,090	77.5	1,481	4,627
Lowest Percentage of Children in Married-Couple Families					
Jefferson County	2,231	1,009	45.2	166	1,056
Tunica County	2,170	968	44.6	200	1,002
Coahoma County	7,805	3,414	43.7	484	3,907
Leflore County	8,914	3,843	43.1	591	4,480
Holmes County	5,365	2,251	42.0	285	2,829

Mississippi Political Geography 2000-2008



Geographic Detail Available from American Factfinder

P7. RACE [8] - Universe: Total population
Data Set: Census 2000 Summary File 1 (SF 1) 100-Percent Data

	Mississippi	Lafayette County, Mississippi	Census Tract 9504	Block Group 4	Block 4052
Total:	2,844,658	38,744	8,802	2,222	46
White alone	1,746,099	27,838	5,520	1,624	34
Black or African American alone	1,033,809	9,705	3,132	571	12
American Indian and Alaska Native alone	11,652	61	10	1	0
Asian alone	18,626	648	51	8	0
Native Hawaiian and Other Pacific Islander alone	667	5	1	0	0
Some other race alone	13,784	162	22	5	0
Two or more races	20,021	325	66	13	0

U.S. Census Bureau Census 2000



Center for Population Studies
University of Mississippi