

Trombone Take-Home Test: 48 points possible

Short Answer and Multiple Choice: 2 points each

1. Name two prominent trombonists.
2. Which three clefs should advanced trombonists be able to read and play fluently?
3. Do the seven slide positions represent absolute, specific points on the slide? Why or why not?
4. During which century did the first trombones appear?
5. Why were the “true” bass trombones in F, Eb, and G largely abandoned in favor of the modern bass trombone, which is really an extra-large-bore tenor trombone with two valves and a bass trombone mouthpiece?
6. Name one good way to evaluate whether or not potential trombone students will achieve the physical stature necessary to reach the outer slide positions.
7. True or False: The elbow is the joint solely responsible for manipulating the trombone slide.
8. This composer was largely responsible for introducing trombones into the symphony orchestra, as the three of his symphonies that used trombones were the first to do so which permanently entered the orchestral repertoire.
9. Legato tonguing is most efficiently produced by
 - a. using a “du” or “lu” articulation
 - b. using a “just slightly softer than normal” articulation, combined with a smooth, consistent airstream
 - c. manipulating the airstream so that the sound of the tongue strike is minimized
10. A wide mouthpiece cup diameter
 - a. allows greater ease in lower register playing, while making upper register playing somewhat more difficult
 - b. creates greater ease of tone production in all registers, especially for players with thin lips
 - c. enhances upper register playing while hampering the lower register

Fingering Identification: 2 points each

*Indicate the preferred slide positions for these pitches on the tenor trombone with F-attachment.

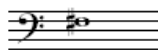
11.



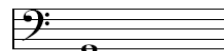
12.



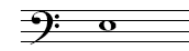
13.



14.



15.



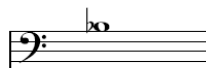
16.



17.



18.



Discussion: 12 points

Briefly describe the proper means of holding the trombone and manipulating the slide. What is the proper position for both hands, how should the weight of the instrument be distributed, and of what does proper movement of the right arm consist?

Click below to submit. Your email program will open and automatically attach the completed form. You must actually send the email to submit your test.